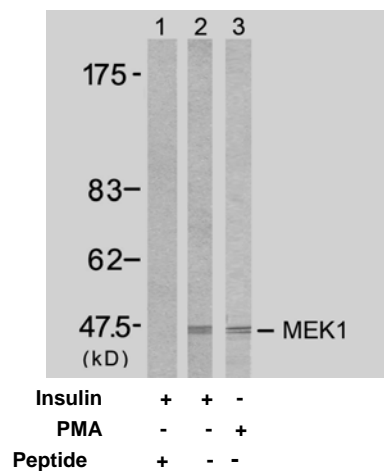




11 Park Drive, Suite 12
Boston, MA 02215

Rabbit anti MEK1 (Ab-217)

- Catalog Number:** AP21203
Amount: 100µl (For 10 Western Blotting)
Swiss-Prot No. : Q02750
Form of Antibody: Rabbit IgG in phosphate buffered saline (without Mg²⁺ and Ca²⁺), pH 7.4, 150mM NaCl, 0.02% sodium azide and 50% glycerol.
Storage/Stability: Store at -20°C/1 year
Immunogen: The antiserum was produced against synthesized non-phosphopeptide derived from human MEK1 around the phosphorylation site of serine 217 (I-D-S^P-M-A).
Purification: The antibody was affinity-purified from rabbit antiserum by affinity-chromatography using epitope-specific immunogen.
Specificity/Sensitivity: MEK1 (Ab-217) antibody detects endogenous levels of total MEK1 protein.
Reactivity: Human, Mouse, Rat
Applications: WB: 1:1000
References: Shen R, et al. (2002) Mol Cell Biol; 22(10): 3230-3236
Preisinger C, et al. (2005) EMBO J; 24(4): 753-765
Laine P, et al. (2000) Biochem J; 349(Pt 1): 19-25
Yaglom J, et al. (2003) Mol Cell Biol; 23(11): 3813-3824
Dahan S, et al. (2002) Infect Immun; 70(5): 2304-2310



Western blot analysis of extract from 293 cells, using MEK1 (Ab-217) antibody (AP21203, Lane 1, 2 and 3).

For Research Use Only

Contact & Ordering Information: Angio-Proteomie, 11 Park Drive, Suite 12, Boston, MA 02215, USA. Fax: (480) 247-4337, angioproteomie@gmail.com